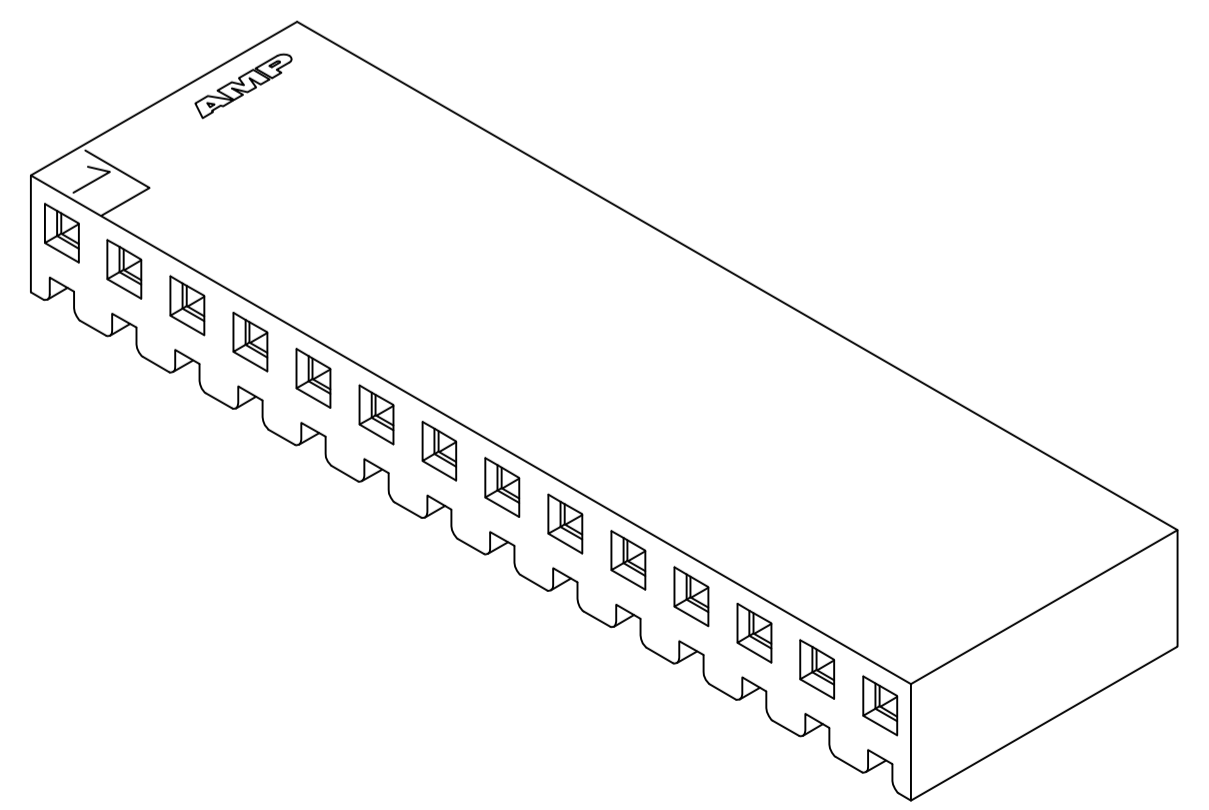
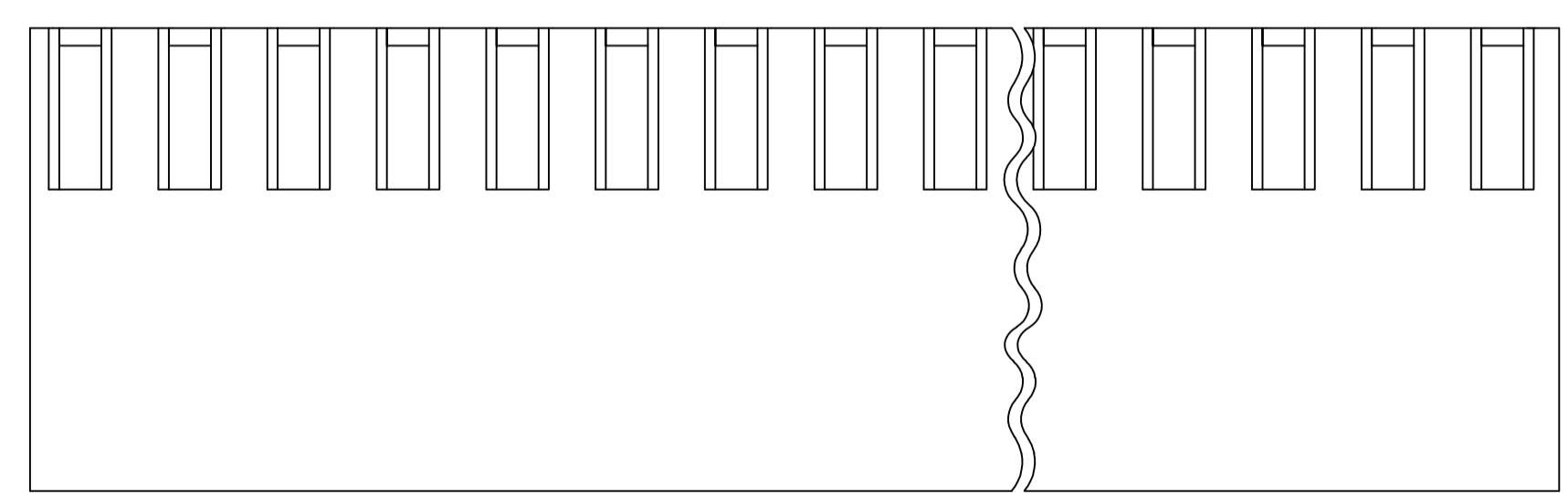
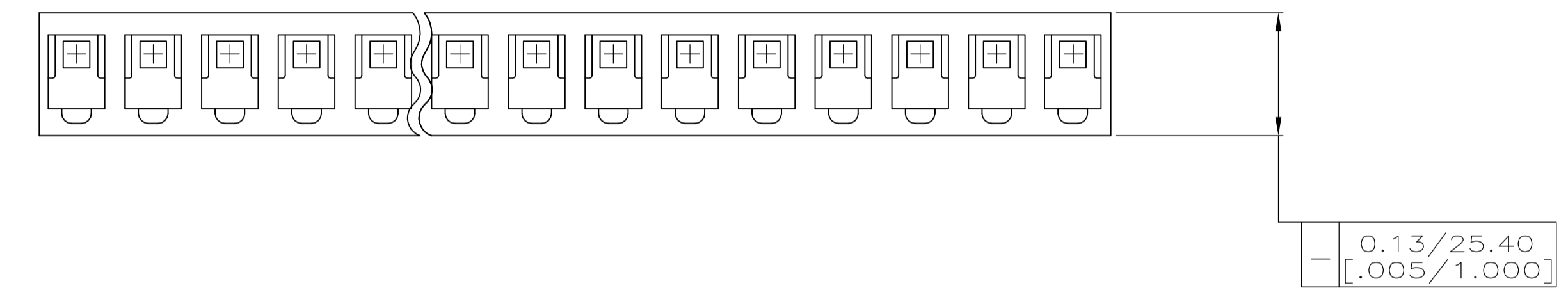
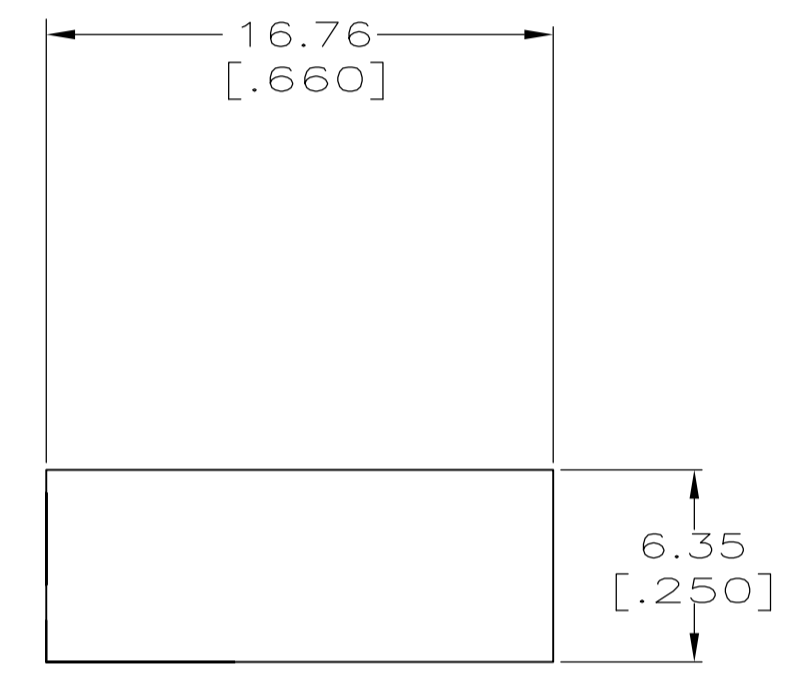
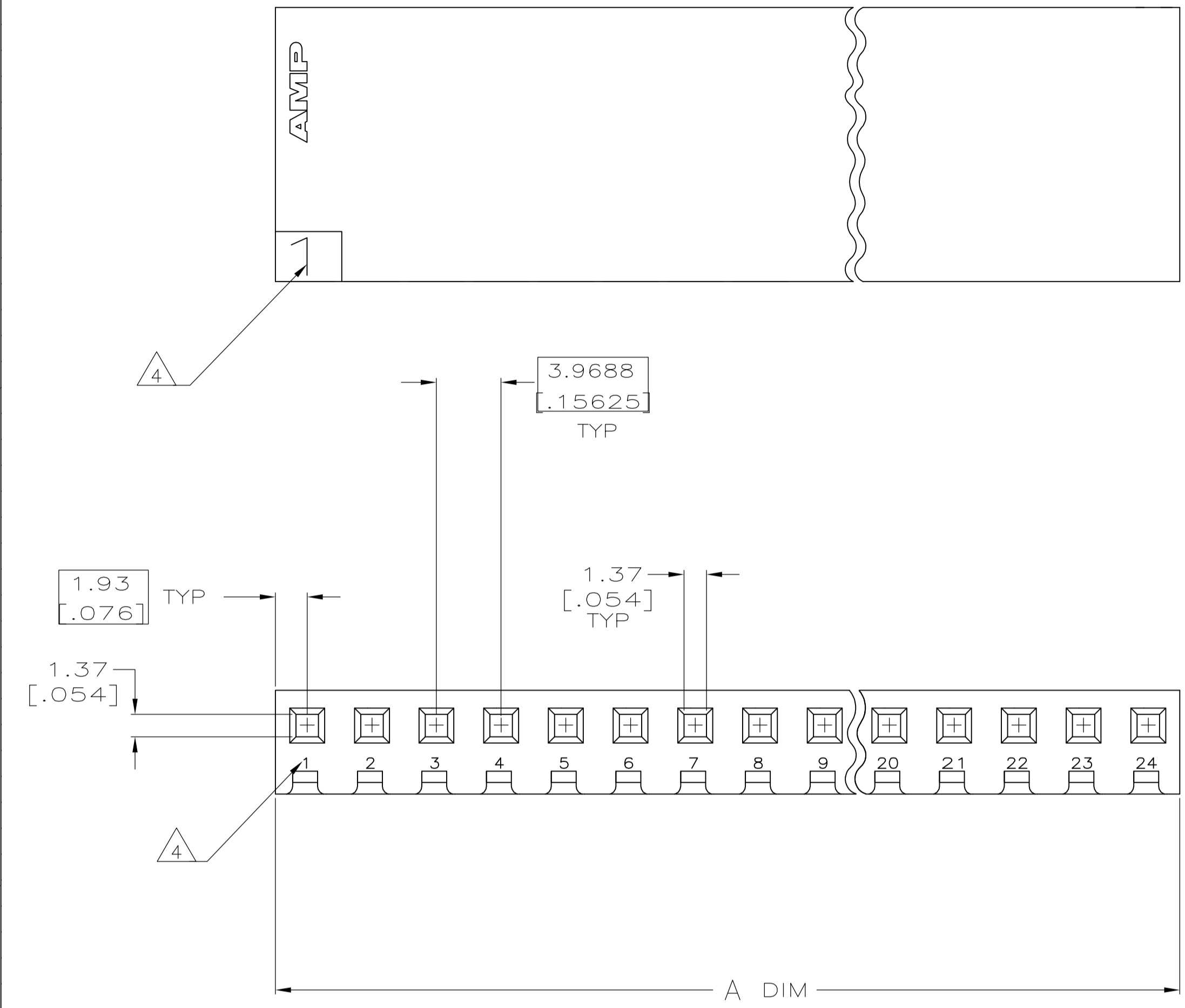


| LOC | | DIST | | REVISIONS | | | |
|-----|----|---------------------------|---------|-------------|------|----|------|
| CM | 54 | REV | DATE | DESCRIPTION | DATE | BY | APPV |
| S | | REVISED PER ECO-12-007807 | 27JUL12 | | | KH | SM |

- 1 UNIT ACCEPTS 1.14 [.045] SQUARE OR ROUND POST.
- 2 UNIT ACCEPTS STANDARD SL-156 CONTACTS.
- 3 UNIT ACCEPTS KEYING PLUG 640254-1 AND KEYING PIN 640255-1.
- 4 CIRCUIT I.D. NUMBER(S) TO BE LOCATED SEQUENTIALLY AS SHOWN OR ONLY NO. 1 CIRCUIT PLACED ON TOP OF HOUSING.
- 5 DIMENSIONS IN BRACKETS ARE IN INCHES.



3-DIMENSIONAL MODEL NTS

| | | | |
|----------------|---------|-----------------|------------|
| 95.15 | [3.746] | 24 | 2-640251-4 |
| 91.19 | [3.590] | 23 | 2-640251-3 |
| 87.20 | [3.433] | 22 | 2-640251-2 |
| 83.24 | [3.277] | 21 | 2-640251-1 |
| 79.27 | [3.121] | 20 | 2-640251-0 |
| 75.31 | [2.965] | 19 | 1-640251-9 |
| 71.32 | [2.808] | 18 | 1-640251-8 |
| 67.36 | [2.652] | 17 | 1-640251-7 |
| 63.40 | [2.496] | 16 | 1-640251-6 |
| 59.44 | [2.340] | 15 | 1-640251-5 |
| 55.45 | [2.183] | 14 | 1-640251-4 |
| 51.49 | [2.027] | 13 | 1-640251-3 |
| 47.52 | [1.871] | 12 | 1-640251-2 |
| 43.56 | [1.715] | 11 | 1-640251-1 |
| 39.57 | [1.558] | 10 | 1-640251-0 |
| 35.61 | [1.402] | 9 | 640251-9 |
| 31.65 | [1.246] | 8 | 640251-8 |
| 27.69 | [1.090] | 7 | 640251-7 |
| 23.70 | [.933] | 6 | 640251-6 |
| 19.74 | [.777] | 5 | 640251-5 |
| 15.77 | [.621] | 4 | 640251-4 |
| 11.81 | [.465] | 3 | 640251-3 |
| 7.82 | [.308] | 2 | 640251-2 |
| 3.86 | [.152] | 1 | 640251-1 |
| A #0.25 [.010] | | NO. OF CIRCUITS | PART NO |

| THIS DRAWING IS A CONTROLLED DOCUMENT. | | DWG | | REV | | DATE | | NAME | |
|--|--|-----------|--|--------------|--|----------|--|--------------------------------------|--|
| DIMENSIONS: mm [INCHES] | | R. LEWIS | | R. SWING | | 6-11-92 | | R. SWING | |
| TOLERANCES UNLESS OTHERWISE SPECIFIED: | | 6-11-92 | | E. BEILES | | 7-15-92 | | NAME | |
| 0. PLC ± - | | | | E. BEILES | | | | HOUSING WITHOUT LOCKING RAMP, SL-156 | |
| 1. PLC ± - | | | | PRODUCT SPEC | | | | APPLICATION SPEC | |
| 2. PLC ± - | | | | | | | | SIZE | |
| 3. PLC ± 0.13 [.005] | | | | | | | | CAGE CODE | |
| 4. PLC ± - | | | | | | | | DRAWING NO | |
| ANGLES ± - | | | | | | | | RESTRICTED TO | |
| MATERIAL NYLON,UL 94V-0 NATURAL | | FINISH - | | WEIGHT - | | A1 00779 | | C=640251 | |
| CUSTOMER DRAWING | | SCALE 4:1 | | SHEET 1 of 1 | | REV S | | | |